



## News from The Moors at Arne



### November 2025 update



Welcome to the latest edition of your monthly Arne Moors project update. Thanks for your on going interest in the scheme.

As we approach winter there is less construction activity happening out on site but plenty of other things still

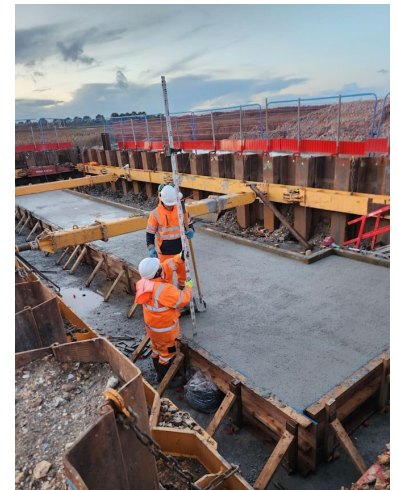
happening as we maintain the site and prepare for the final year of works in 2026.

The photo above shows a view of the eastern side of the site with the new embankment and part of the permissive footpath which will join up to the existing RSPB Hyde's Heath walk

### Construction progress

Work has continued on the two water control structures which will serve the Northern and Southern saline lagoons. We have been granted permission to carry out this work outside of the usual seasonal construction window.

The foundations have now been laid for both structures and the remaining elements will be completed next year. The base for the northern lagoon structure sits on top of cylindrical piles which provide increased stability due to the softer ground in this part of the site.



We have completed the footpath works for this year with some further sections completed at Bank Gate Heath and towards Sunnyside car park. The final sections, including some footbridges, will be constructed next year when everything will join up to create several exciting new walking routes for locals and visitors to the area.

The footpaths will be open early in 2027 once the scheme is complete.



Credit: Biota Ecology

Over the winter it is necessary to manage vegetation in certain areas of site in preparation for next year's works. Over the past few weeks innovative amphibious machines called truxors have been helping the team to carry out some of this work in areas which would be hard to reach using traditional machinery.

A truxor is designed to work in water and wetlands environments and is capable of cutting and collecting vegetation whilst afloat. It's been fascinating to see the skilled operators using this bit of kit.

## Ecology updates

As part of our effort to provide enhanced reptile habitats outside of the intertidal area, the team have created some additional safe habitat spaces for reptiles to hibernate in. The large one pictured here was constructed earlier this month.



Our senior ecologist has been busy conducting over wintering bird surveys to ensure we have a clear picture of species visiting site. Communication between the site team and ecologists is key to ensure that birds are not disturbed when roosting and resting at this sensitive time of year.

## Community engagement



The Kier team have taken the opportunity to get involved with careers events in the local area as part of our commitment to delivering social value in the communities we work in.

On 7th November, Justin, Kate and Nick delivered a careers talk at the Dorset Studio School as part of Green careers week. Over 70 students from year 9 came along to learn more about some of the exciting green careers available in the construction industry.

On the same day, Jamie attended the Jurassic Coast STEM Conference. He provided an inspiring talk on what it's like to work in the construction and engineering industry and the various careers available. The conference was hosted at Bournemouth University and attended by around 240 students from local secondary schools.

## What's next?

The last few temporary site cabins will be leaving site for the winter over the next few weeks. This will mean a few larger loads travelling on local roads but any disruption should be minimal. We apologise in advance for any inconvenience.

The main site offices will remain in place over the winter months and the team will be busy planning for the final year of works as well as maintaining the site and carrying out ecological work.



Soldiers Road will be closed near the junction with Arne Road on 8th-9th December for SSE works. For the latest updates please check the [Dorset Council roadworks map](#)



## About the project

The Moors at Arne project is adapting over 150 hectares of land into a diverse wetlands habitat. This type of habitat is being lost in other areas of Poole Harbour due to 'coastal squeeze'. This is a term used to describe the effect of rising sea levels pressing against man-made structures such as flood defences resulting in a loss of intertidal habitat such as mud-flats and salt marsh.

Kier is the contractor delivering this project on behalf of the Environment Agency and its project partners, RSPB and Natural England.



Got a question for the project team?  
Contact us via [arne@kier.co.uk](mailto:arne@kier.co.uk)