

A white outline map of Dorset is centered on a light blue background. The map shows the county's coastline and internal district boundaries.

Welcome to the Dorset Coast Forum Conference

19 November 2025



Wi-Fi
Network:
Lifeline
Password:
Se4sas3ty

Social Media
#DCFConference25

Dorset Coast Forum Conference Update 2025

Toni Powell
DCF Co-ordinator



The Dorset Coast Forum Team



Toni Powell
DCF Co-ordinator



Nikki Parker-Goadsby
Support Officer



Izzy Kelsall
Project Assistant



Sam Scriven
Principal Officer
World Heritage



Sara Parker
Project Officer



Elaine Snow
Project Officer



Matthew Smith
Project Officer



COASTAL LIFE STORIES

A photography exhibition that celebrates some of Dorset's exceptional individuals and organisations who dedicate their work and efforts to protecting, enhancing and helping shape a positive future for the Dorset Coast and its communities.



**FREE PUBLIC
EXHIBITION
ACROSS DORSET**



**FOR DATES AND
VENUES
SCAN HERE**

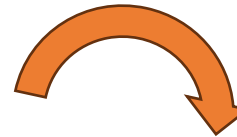


www.dorsetcoast.com
Brought to you by Dorset Coast Forum

30 years – Coastal Life Stories Exhibition

"I think the legacy I would like to leave is people actually having that awareness, about how the coast changes. And for me, I think that's bigger than anything, is just trying to get that message over to younger people and to visitors."

*Ali Ferris,
Manager for Earth, Marine and Environmental Science,
Charmouth Heritage Coast Centre*

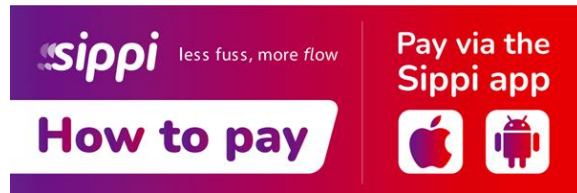
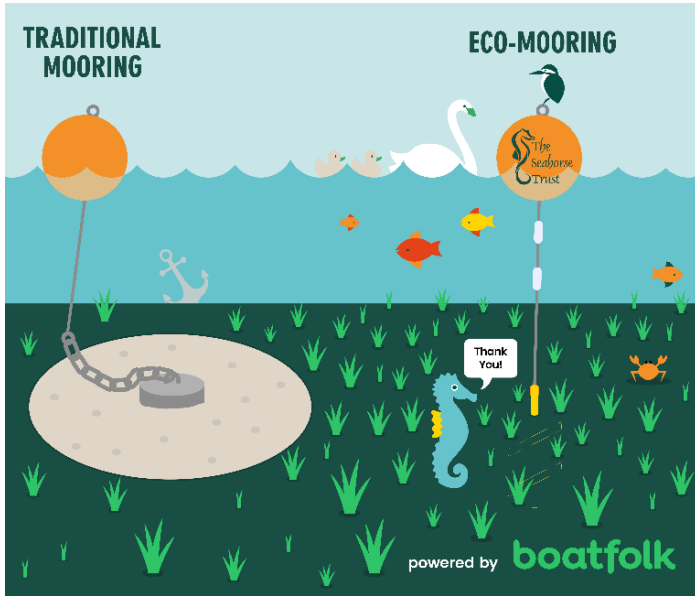


**Coastal Life Stories
Exhibition Video**

30 years Discovery Fest, Swanage



Studland Bay Marine Partnership



- Boat owners, National Trust, Parish Council, MMO, Conservation groups, businesses, Crown Estate
- **87 eco-moorings**, funds by FaSS, private sector & Crown Estate.
- VNAZ area marked out by buoys, sponsored by the **Ocean Conservation Trust**.
- Sippi daily payment system & compliance monitoring
- **Research & monitoring** – MMO, NT & Southampton Uni
- Creating awareness – boat users, DCF, NT & Studland Watersports

Re-energising Dorset's Economy

- **Creating awareness** in Weymouth, Portland and Chickerell
- Presenting a range of opportunities – regeneration, clean energy, Dorset Local Plan, Weymouth Masterplan, skills & education & open space
- Helping to identify **heritage & character** for each town



Chickerell Community Engagement Event

Friday 22nd August 2025
Willowbed Hall, 39 Putton Lane, Chickerell
Drop-in anytime between 11am to 3pm

The poster features a large aerial photograph of Chickerell. Two circular inset images show a young girl with a purple flower in her hair and a group of children sitting at a table with colorful craft supplies.



Portland Community Event

Drop in Event Easton Methodist Church Hall
Thursday 16th October
2pm to 7pm

The poster includes a grid of five small images: a person at a computer, a helicopter, a coastal landscape, a group of people at an outdoor event, and an aerial view of the town. Logos for Dorset Coast Forum, Dorset Council, Dorset Clean Energy Super Cluster, and Portland Town Council are at the bottom.

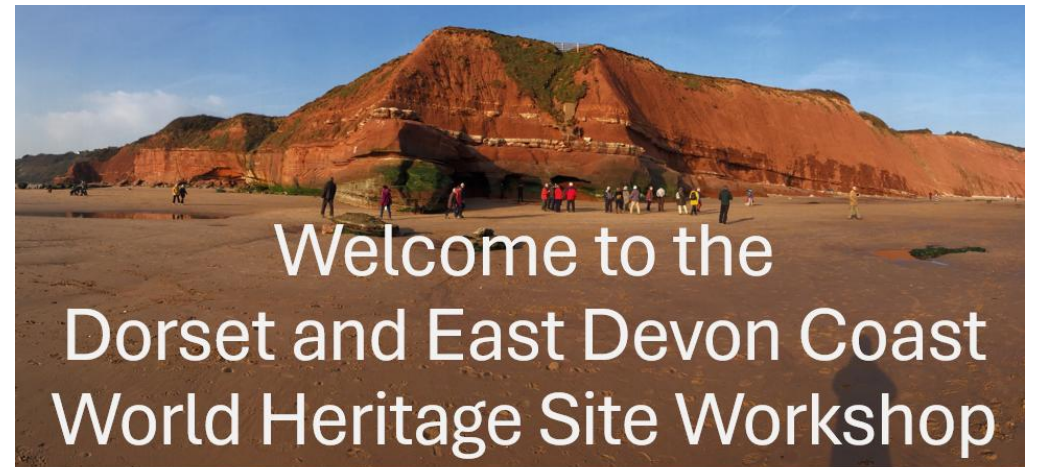


Dorset Clean Energy Super Cluster



Jurassic Coast, World Heritage Site

- **Stakeholder workshop** of over 70 representatives – feeding into plans and priorities going forward
- **Shared updates** on WHS within DCF comms
- Linked WHS to our activities, making use of this expertise
- New WHS Officer starting in January





Future Charmouth and Future North Swanage

- Part of a nationwide programme led by the Environment Agency
- Aims to work with communities to adapt to change
- Looks at practical solutions, tests new ideas and builds a better understanding
- Develops adaptation plans with community led solutions
- Works with planning
- Co-ordinate advice relating to public liability and insurance

Look out for DCF Project Officer Sara back on the beach in North Swanage this Thursday!
Thursday 26th June 2025

COAST DORSET
HAVE YOUR SAY

#CoastalConnection



Flood and Coastal Defence

- DCF supporting plans and policies in Swanage, Weymouth, Portland, Chiswell, Lyme Regis and BCP area.
- Information sharing, facilitation, and enabling residents and businesses to feed into planning.
- On-site engagement – Preston Beach recycling scheme
- Exploring funding opportunities e.g. Heritage Lottery Funding for the Cobb in Lyme Regis

Stabilising the Cobb: What are the options?



Drop in and chat about possible options that could help stabilise the iconic Cobb for the future

Thursday 27 November, 12-6pm, Jubilee Pavilion, Marine Parade, Lyme Regis

- Share your thoughts and ideas regarding the options
- Can you suggest other improvements?
- Do you have any further concerns relating to the Cobb?
- Learn about the complexities in protecting this internationally important structure
- Celebrate the history of the Cobb and tell us what it means to you!



Keep updated on the scheme by scanning the QR code

<https://www.dorsetcoasthaveyoursay.co.uk/lyme-regis-cobb-stabilisation-scheme>



Dorset Coast Forum Working with communities to promote, enhance and protect our coast.

Dorset_CF
DorsetCoastForum
dorsetcoastforum



Preston Beach Recycling Scheme

Beach Makeover in Progress!

Starting on the 7th November for 2 weeks the Environment Agency will be making Preston Beach more resilient to coastal change through a beach recycling scheme.

Large areas of the beach and promenade may have reduced access for public safety reasons. **This will include weekends.** Please follow all signage and instructions from site staff.



PRESTON BEACH RECYCLING SCHEME

COAST DORSET HAVE YOUR SAY

Dorset Coast Forum


Dorset Council

For more information please visit the project webpage
<https://www.dorsetcoasthaveyoursay.co.uk/preston-beach-recycling-scheme?preview=true>


Department for Environment Food & Rural Affairs
Environment Agency

LET'S TALK ABOUT CLIFFS

What is the Cliff Management Guide?



The new guide will raise awareness about cliff erosion and provide practical advice and other essential information for landowners, homeowners, businesses, or residents who manage privately owned cliffs.

- Talk to us about the cliffs you know
 - Think about the cliffs you live or work on or near
 - Take part in the survey and tell us about your knowledge and experiences
 - Tell others to get involved
- 

Cliff management refers to the strategies and practices employed to prevent erosion, landslides, and other geological hazards that can affect properties and public safety. The guide will outline the natural processes that influence cliff stability and offers practical advice on how to mitigate potential risks.

How to get involved?

VISIT WWW.DORSETCOASTHAVEYOURSAY.CO.UK TO LEARN MORE AND FILL OUT THE SURVEY!



Swanage Green Seafront and Shore Road

- Stabilisation and enhancement of green space adjacent to main beach
- Four options for Shore Road in response to Swanage Seafront Masterplan
- Around 1,400 survey responses

Swanage Neighbourhood Plan

- Setting out what neighbourhood plan is and where community can have influence
- Public facing events, plus targeted youth engagement





Youth Engagement



- **Outdoor Classroom Day**, Multi partner led, attended by over 160 pupils from 7 schools, excellent feedback
- **Visits to schools and Colleges** – Weymouth College Environment Week, Atlantic Academy School
- **Targeted youth engagement** – enabling young people to have their say

Aged 11-18? Live in Swanage?
It's your plan too!

means you help create places that are fun, safe and supportive for everyone!

This survey will be open until 31st October 2025

WE WANT YOUR FEEDBACK!

HAVE YOU TAKEN THE ONLINE YOUTH SURVEY YET?!



Cliff erosion at Barton-on-Sea, Hampshire! This fissure on the cliff top separates a block of Pleistocene gravel from the rest of the cliff, moving seaward, fast or slow, but probably rather fast.
Image and copyright of Steve of the Wexmes Hang Gliding and Paragliding Club.



Next Steps

- Continued support for existing projects
- Project development:
 - Improved beach access
 - Research project on cliff instability
 - Submission to HLF for Lyme Regis Cobb surface improvements
- Marine Nature Recovery Strategy
 - This is coming our way!