

# Suttle Projects



**Livvy Williams**  
**Head of Compliance**  
**Suttle Projects**



**Ricardo Leite**  
**Contracts Manager**  
**Suttle Projects**



# Poole Bay Beach Management Scheme

Co-funded by EA and BCP Council



Replacement of seven life expired timber groynes



KEY:	
	Year 1 Working area A - 8th October 2025 to 31st December 2025,
	Year 1 Working Area B - 1st January 2026 to 20th March 2026,
	Year 2 Working Area - 8th October 2026 to 21st March 2027,
	A20 Beach Profile Location and Name
	New Groyne to be constructed
	Existing groyne to be deconstructed

# Poole Bay Beach Management Scheme

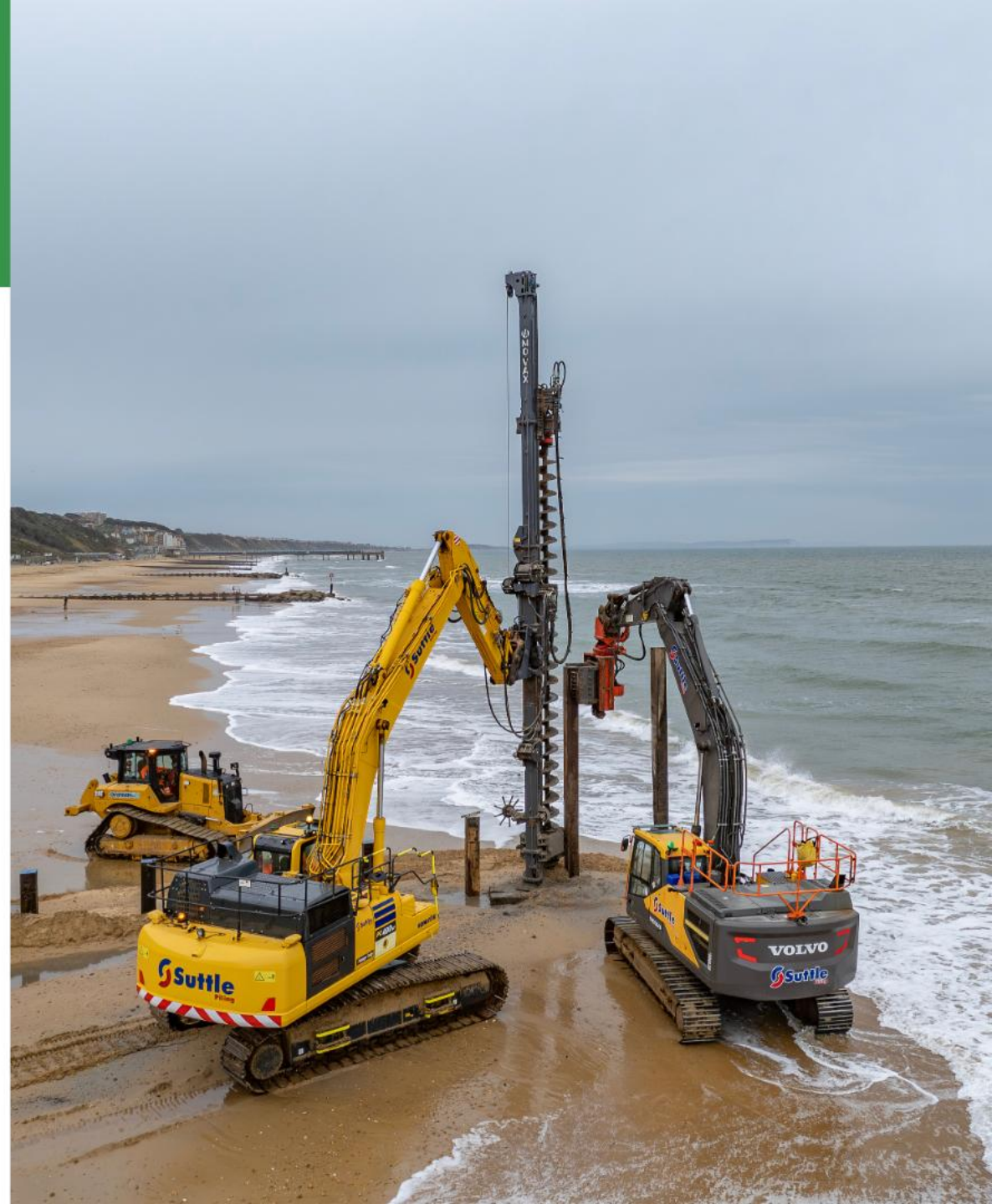
## Objectives:

- Mitigate long term erosion risk to property and infrastructure
- Provide value for money prior and during construction
- Integrate engineering, social and environmental requirements

# Engineering

## Piling:

- 207no piles
- Between 10.5m and 12.5m long
- Circa 8m embedment depth



# Engineering

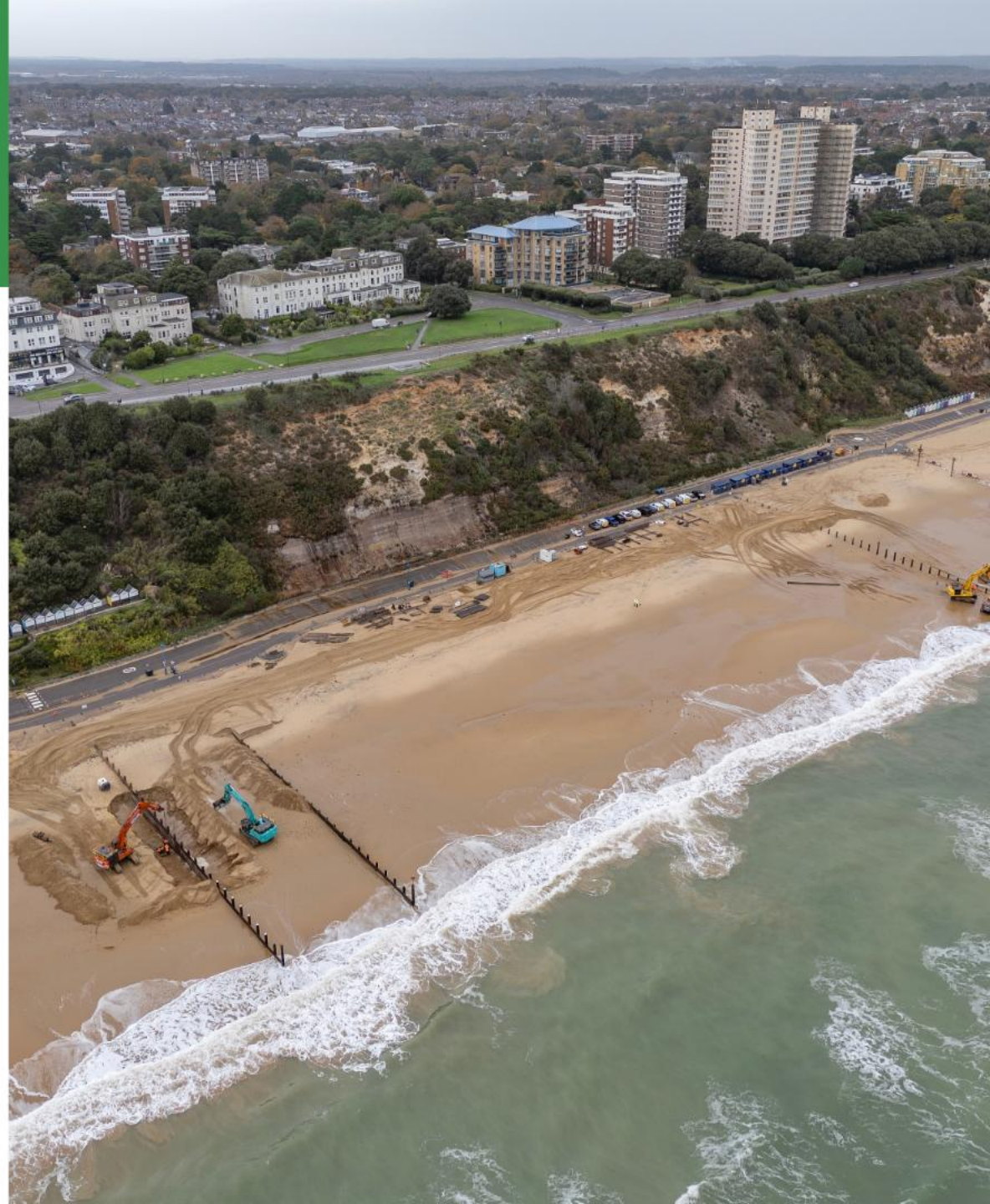
## Planking:

- 1,634no planks
- 9,122.5 linear metres



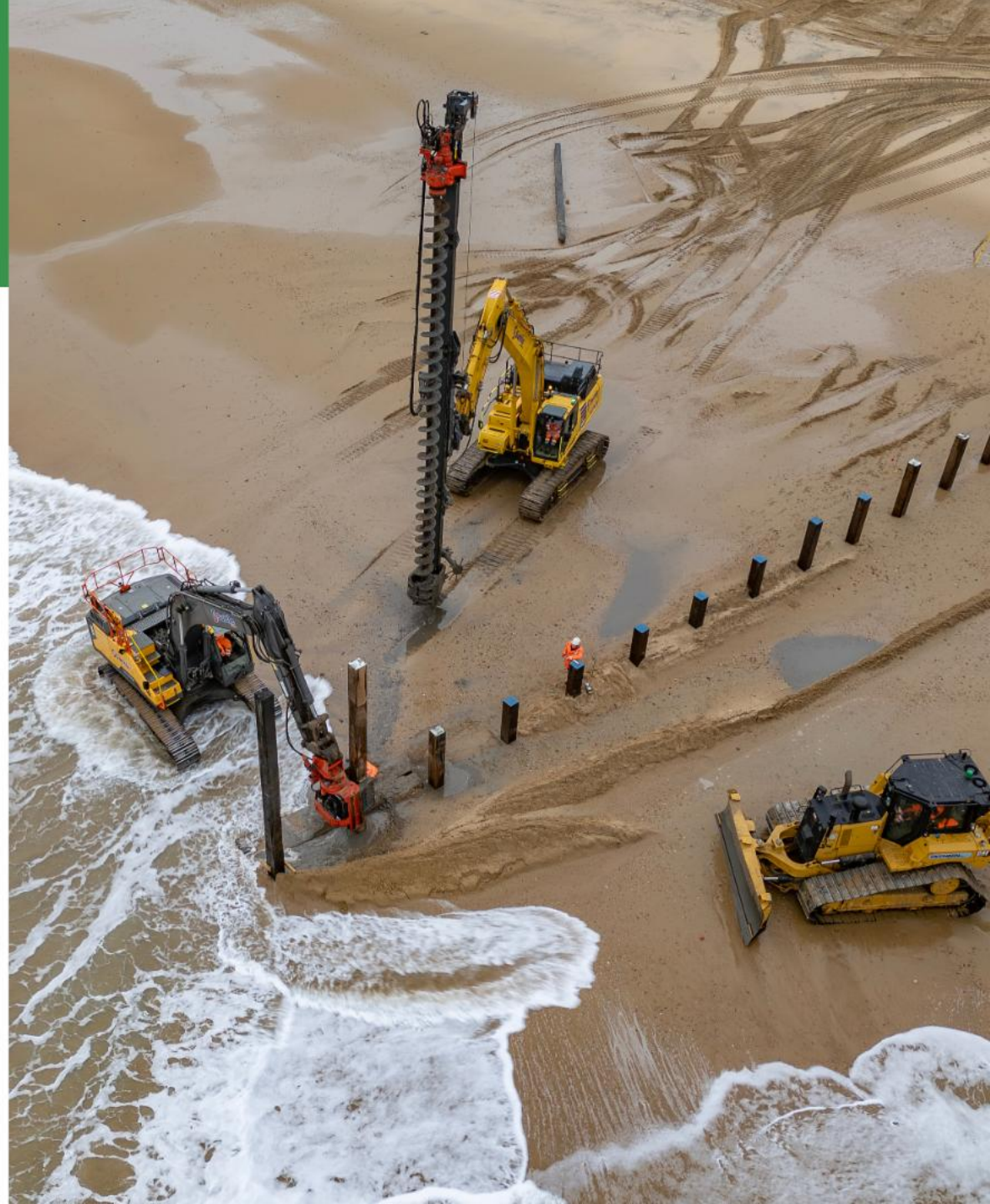
# Environmental

- Procurement of timber
- Use of recycled timber
- De-construction
- Fixings



# Environmental

- Fuel – 265,000 litres
- Bio-oil
- Efficient programme
- Local resources



# Timber or Rock Groyne?

	Timber Groynes	Rock Groynes
Durability	Low–medium	High
Hydraulic behaviour	Reflective	Energy dissipating
Maintenance	High	Low
Cost	Lower upfront	Higher upfront
Aesthetics	Subtle	Bulkier, rugged
Ideal location	Low-energy, sheltered beaches	High-energy, exposed beaches

Wave and sediment-transport studies show that Poole Bay receives a moderate amount of wave energy.

# Social Value



