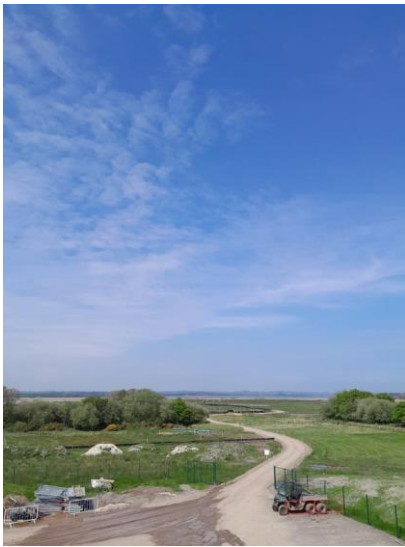




News from The Moors at Arne



May 2024 edition



Welcome to the latest edition of the Moors at Arne project newsletter. The sunny skies over the past few weeks have been very welcome here on site and we hope you have been enjoying all that spring has to offer.

Over the last month the team have been getting stuck into the construction phase of the scheme. The first of the new outfall structures is now being built and we are in the early stages of digging one of the long ditches which will follow the line of the western embankment.

What's happening on site?

A cofferdam has been constructed and excavated to enable the team to build the Furzebrook outfall structure. A cofferdam is a dry working enclosure used for building structures in a wet environment.

The Furzebrook outfall is the first of several new structures which will help control water levels on the completed scheme. The Furzebrook outfall will help to discharge water from the Furzebrook stream into the new intertidal area at low tide via special fish-friendly flap valves. It will then close to prevent the high tide coming back in.



Digging of a new ditch along the freshwater side of the western embankment has also now commenced. This ditch will be approximately 1400 metres long once complete and will help to control water levels in the new freshwater habitat area. This new ditch, known as a 'toe ditch' is required as some of the existing drainage ditches on site will be filled in as the project progresses.



The excavators being used to carry out the digging are kitted out with the latest GPS and 3D modelling software to ensure exact lines and levels are achieved.

The eastern embankment will be constructed in 2025 and will also have a toe ditch alongside.

Community update



Some new pole mounted 20mph speed limit signs have been installed along New Road and part of Arne Road, replacing most of the freestanding signs. This was implemented following feedback from the local community that some drivers are not seen to be adhering to the temporary speed limit which is in force for the duration of the project and applies to all vehicles.

It is hoped that the new signage will make it clearer to all vehicles where the speed limit changes from 30mph to 20mph and that it applies to all vehicles, not just construction traffic.

Ecology

The ecologists have been busy monitoring the site for signs of any active bird nests near to areas we will be working in. At last count 15 nests had been identified including lapwing, Cetti's warbler and skylark like the one pictured below. In each instance, an exclusion zone is drawn up and implemented to ensure that nesting birds are not disturbed by construction activity and the nests are carefully observed by the ecologists.

At last count, five adders had been found and relocated to a different part of site to ensure they are able to thrive in a suitable habitat away from construction activity. The ecologists photograph each one in order to keep a record of their unique markings so that they can be identified if they are found again.

A camera was set up recently after one of the ecologists noticed an increase in otter signs in an area of site. The camera captured the lovely image below of a family of otters passing through the area. We just had to share it!



Coming soon

The archaeologists have just moved into a second dig site and will be working over the next few months to find out more about the area. We will keep you updated as the dig progresses.

Work will continue on the Furzebrook outfall structure and the toe ditch over the coming months.

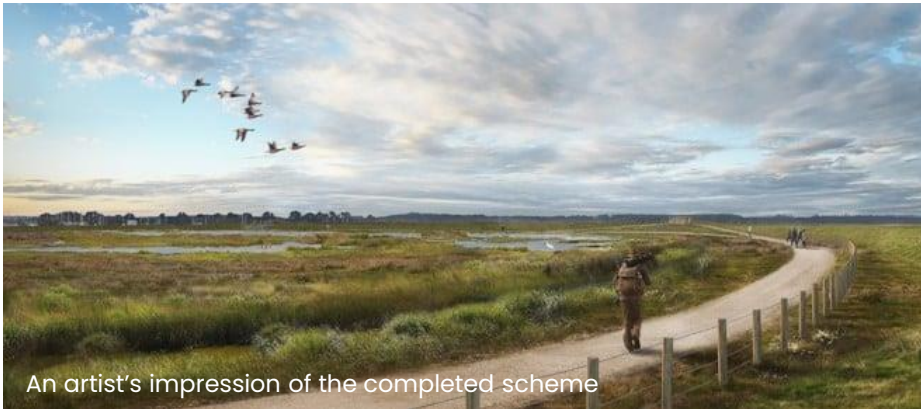
You may recall from previous newsletter that the embankments will be constructed from material sourced from within the site boundary. The team are now testing material in some of the areas where it will be sourced from and will shortly commence stockpiling.



About the project

The Moors at Arne project will adapt 150 hectares of land into a diverse wetland habitat. This type of habitat is being lost in other areas of Poole Harbour due to 'coastal squeeze'. This is a term used to describe the effect of rising sea levels pressing against man-made structures such as flood defences resulting in a loss of intertidal habitat such as mud flats and salt marsh.

Kier is the contractor delivering this project on behalf of the Environment Agency and their project partners, RSPB and Natural England.



An artist's impression of the completed scheme

Keeping in touch

We welcome your feedback and are here to answer any questions you may have about the project. Please email arne@kier.co.uk

For more information about the project please visit our web pages

<https://www.dorsetcoast.com/project/moors-at-arne-coastal-change-project/>

