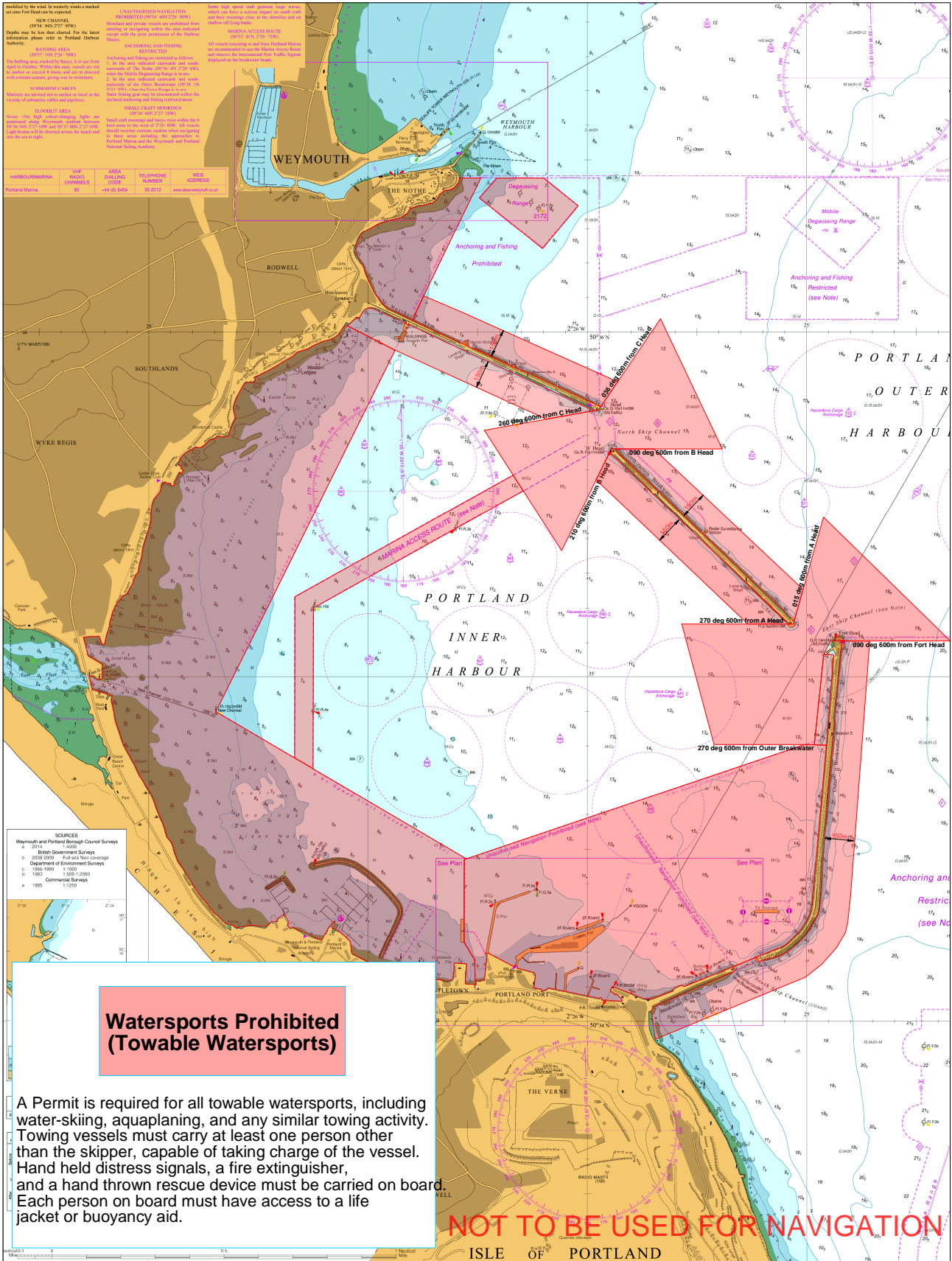




# Portland Harbour Towable Watersports Restrictions



© Crown Copyright and/or database rights. Reproduced by permission of the Controller of Her Majesty's Stationery Office and the UK Hydrographic Office ([www.GOV.uk/UKHO](http://www.GOV.uk/UKHO)). This is an interpretation of the Portland Harbour Revision Order 1997. The Portland Harbour Revision Order 1997 will take precedence in all cases.

Portland Harbour Revision Order 1997 Schedule 1, Paragraph 47.

Version 2 May 2018