



Defence  
Infrastructure  
Organisation

# The Lulworth Ranges Information for Mariners 2018



Range Control  
Lulworth Camp  
Wareham  
Dorset  
BH20 5QF



1. **Army units are trained in gunnery on the Lulworth Ranges.** Much of the training involves shooting on the Lulworth Ranges and during firing periods it helps us **if mariners please for their own safety avoid our sea danger areas**, which extends some 6 nautical miles south of Lulworth Cove, and keep at least 1+ miles clear of the target buoys on St.Albans ledge. Valuable training time can be lost when vessels stray into the range; delays are frustrating and expensive, so we welcome your co-operation. Full details of the sea danger areas are available in yacht clubs. A map is reproduced on the back page for your convenience.

2. **Daylight Firing.** Normal firing times are: All Local Times:

Monday to Thursday	0930	-	1700 hrs
Friday	0930	-	1230 hrs
Friday firing weekends only	0930	-	1700 hrs

3. **Night Firing.** Tuesdays and Thursdays are chosen for night firing, sometimes other days are selected. Firing begins as soon as it is dark and lasts until 23.59. The timing obviously varies with the season of the year.

4. **Weekend Firing.** Territorial Army training is annual and firing takes place at weekends, but this only occurs a maximum of 6 times a year and is programmed well in advance. For 2018 a total of 6 weekends have been reserved for firing and these are:

13 - 14	January	2018
24 - 25	February	2018
17 - 18	March	2018
13 - 14	October	2018
10 - 11	November	2018
8 - 9	December	2018

5. Exact details of the firing programmes, including any changes to the forecasts given in the paragraphs above, are sent monthly in advance to all the main yacht clubs in the area.

6. Firing times are broadcast on Radio Solent (300m, 221m, 96.1 MHz and 103.8 MHz) during the shipping and weather news at about 0645 and 0745 hours on weekdays.

## Information for Mariners

## Information for Mariners

7. **Non Firing Periods.** There will be no Army firing within the DO 26 inner area and no sea danger areas will be operated during the periods below (all dates inclusive):

Christmas	16 December 2017	-	1 January 2018
Easter	30 March 2018	-	15 April 2018
May Day		7	May 2018
Spring	26 May 2018	-	3 June 2018
Summer	28 July 2018	-	2 September 2018
Christmas	22 December 2018	-	6 January 2019

8. **Danger Signals.** Red flags are flown, and red flashing lights are displayed from the flag-staffs on Bindon Hill, Kimmeridge Bay and St. Albans Head **ONLY WHEN ARMY FIRING IS TAKING PLACE.** However, further ashore, mariners may notice some red flags which fly whether or not firing is taking place, these mark the range boundary.

9. **Range Boats.** During firing, range safety boats are on station (in all practicable weather conditions) at the outer extremities of the danger area.

10. **Radio.** Army Range Control listen on Channel 8 and range boats listen on VHF Channel 8 and 16 when firing is in progress.

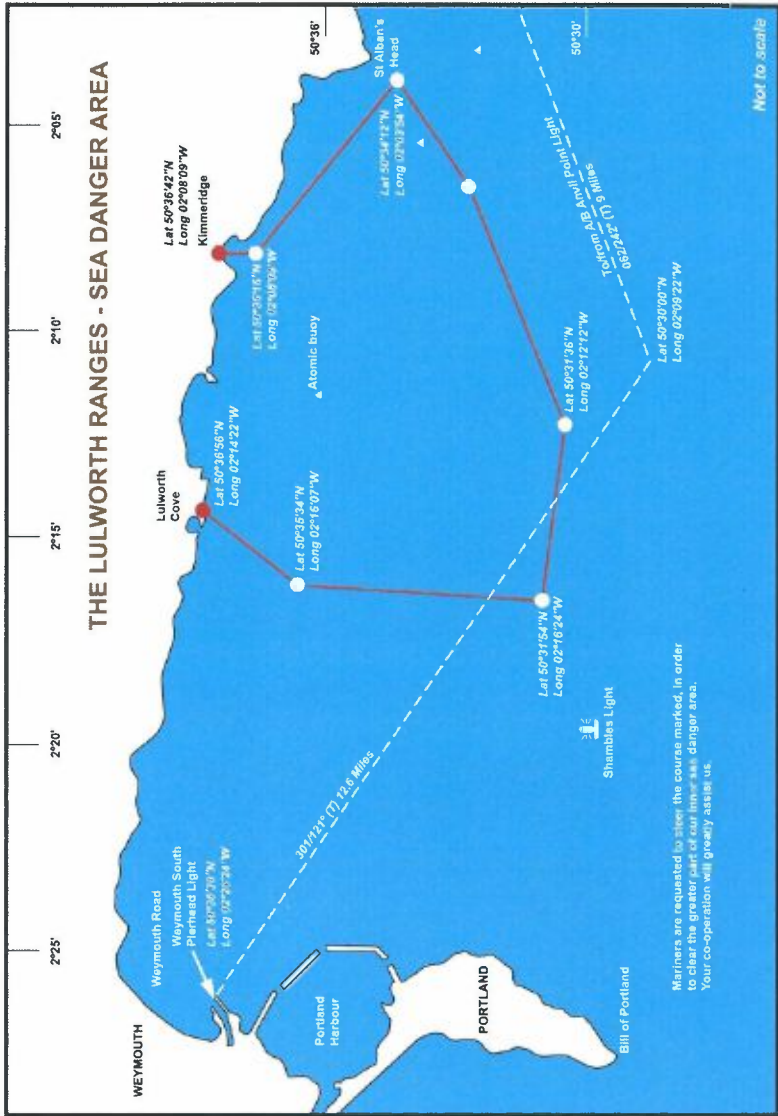
11. **Bylaws.** Copies of the Bylaws affecting the Lulworth Ranges are available for inspection at a number of places, the most convenient being the Coastguard Station HQ, Weymouth, or the Weymouth Harbour Office.

12. **For further information, please contact :**

**01929 - 404701    Working Hours or  
01929 - 404819    for current range information**

or speak to the Range Safety Boats direct. They will be able to give you a safe course of passage outside the Live Firing Sea Danger area. Their call sign is - **"Lulworth Range Safety Boat"**.





Datum - OSGB 36



Designed and printed by  
Training Technology Enhanced Learning  
HQ Armour Centre, Allenby Barracks, Bovington BH20 6JA  
E-mail: ARMCCEN-TDSG-TTEL-0Mailbox@mod.uk

17\_00593\_Information For Mariners\_2018